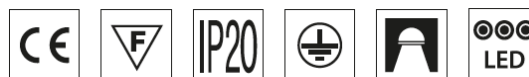




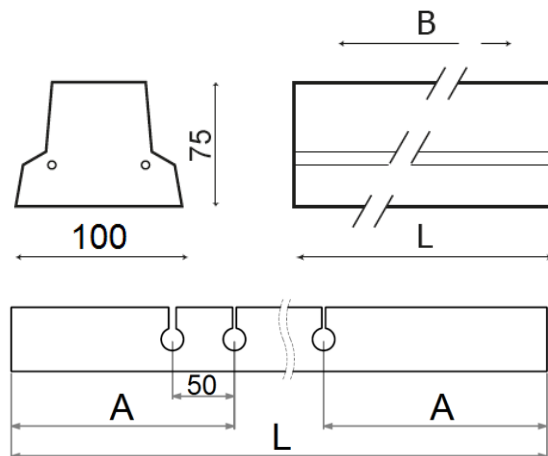
Installation manual
Poker LS LED



220-240V/50-60Hz

1. Dimensions:

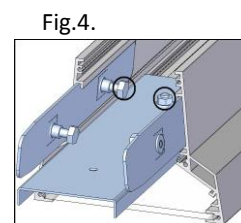
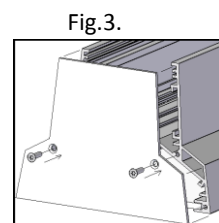
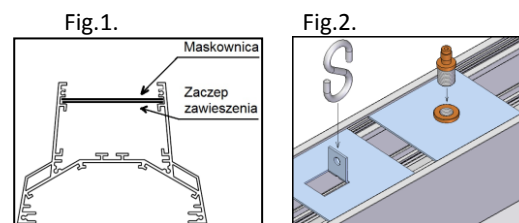
Power [W]	Length L [mm]	Suspension points distance w/ a masking cover B [mm]	Suspension points distance w/o a masking cover B [mm]	Distance A [mm]	Weight/ weight w/ a masking cover [kg]
47	1200	840	adjustable	180	3,25 / 3,50
73	1800	1260	adjustable	270	4,40 / 4,80
118	3000	2100	adjustable	450	7,80 / 8,50



Masking cover

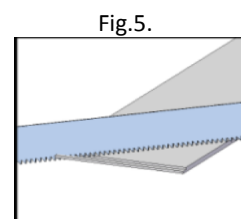
2. Installation:

- Turn off the power in the circuit the luminaire is going to be connected to.
- Assemble the suspension kits (accordingly to the suspension manual).
- Take the luminaire out of the package.
- Slide in the suspension hitches as in fig.1.
- Install the suspension regulators or chains (depending on the suspension type) as in fig.2.
- Thread the suspension wires through the regulators (simple suspension type).
- Connect the power supply accordingly to the markings on the connection terminal.
- In case of a single-mounted luminaire (OPAL) cut the diffuser as in Fig. 5
- Put the end caps on the luminaire as in Fig. 3.
- Install the masking cover (if it is included in the set)



Light-line installation:

- Follow points a-f from section 2 for each luminaire in the line.
- In order to join two luminaires together, slide a central joint into the first and two side ones, next, tighten the screws to the profile.as in Fig. 4
- Slide the second luminaire onto the central joint and tighten the screws
- Connect the fast connectors on each end together.
- Aftern full line assembly, put the end caps on both ends as in Fig. 3
- Connect the power supply accordingly to the markings on the connection terminal
- Install the masking cover (it is included in the set)



3. Important warnings:

Luminaires may be installed by qualified and registered personnel only.
Any manipulation inside the luminaire when the power is activated causes the risk of electric shock.
The manufacturer is not responsible for any flaws resulting from actions not compliant with these instructions.
The manufacturer reserves the right to change the construction of the product.
Do not install the luminaire in places without sufficient air circulation.
To guarantee safe luminaire operation, please follow the instructions in the installation instructions.



The European Directive 2002/96/EC on waste electrical and electronic equipment, requires that electric and electronic devices must be disposed of in the normal household waste. The crossed out wheeled bin is reproduced in order to remind obligations towards separate collection. For correct disposal, please use authorized waste disposal facilities or return to the distributor at the date a new lighting fitting is purchased. Lamps, if disposed together with the lighting fitting, shall not be broken up since they contain substances which are highly polluting to the environment. Unauthorized disposal of the foregoing waste material is punishable by law.

