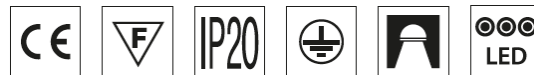


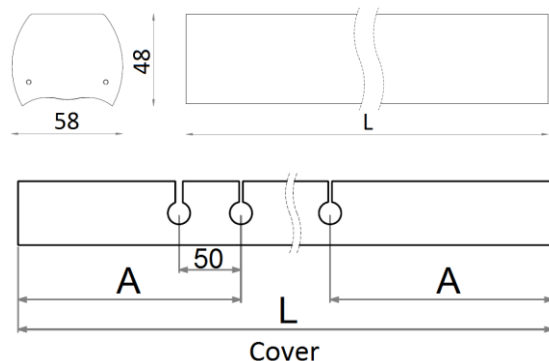
**Installation manual**  
**Poker LS Micro LED**



220-240V/50-60Hz

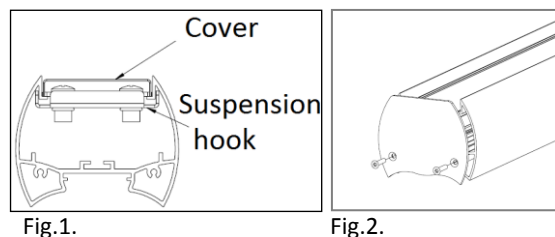
**1. Dimensions:**

Power [W]	Length L [mm]	Suspension points distance w/ a masking cover B [mm]	Suspension points distance w/o a masking cover B [mm]	Distance A [mm]	Weight/ weight w/ a masking cover [kg]
22	1150	550	adjustable	300	1,8 / 2,1
32	1722	1122	adjustable	300	2,5 / 3,1
51	2870	1870	adjustable	500	3,9 / 4,5
60	3442	2242	adjustable	600	4,6 / 5,3



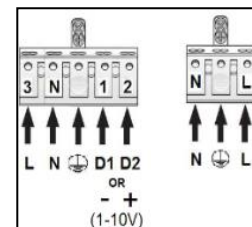
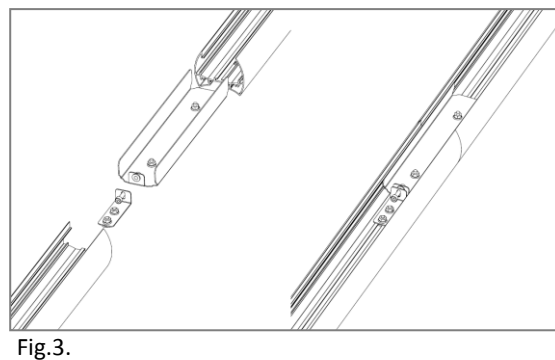
**2. Installation:**

- Turn off the power in the circuit
- Assemble the suspension kit (accordingly to the instructions).
- Take the luminaire out of the package.
- Install the suspension hitches accordingly to the Fig. 1
- Put the regulators in.
- Pull the suspension wires through the regulators.
- Connect the power supply to the connector accordingly to the markings.
- Fix the end caps as in Fig. 2.
- Put the masking cover on (if it was included)



**Light-line installation:**

- Follow the points a-f for every luminaire in a run.
- In order to join two luminaires together, slide in a joint into the first one and tighten the screws.
- Slide the second luminaire onto the joint and tighten the 2nd set of screws.
- Connect the through-wiring fast-plugs together.
- After achieving a desired length of the run, fix the end caps to both ends as in Fig. 2
- Connect the power supply to the connector accordingly to the markings.
- Put the masking cover on (if it was included)



**3. Important warnings:**

Luminaires may be installed by qualified and registered personnel only. Any manipulation inside the luminaire when the power is activated causes the risk of electric shock. The manufacturer is not responsible for any flaws resulting from actions not compliant with these instructions. The manufacturer reserves the right to change the construction of the product. Do not install the luminaire in places without sufficient air circulation. To guarantee safe luminaire operation, please follow the instructions in the installation instructions.



The European Directive 2002/96/EC on waste electrical and electronic equipment, requires that electric and electronic devices must be disposed of in the normal household waste. The crossed out wheeled bin is reproduced in order to remind obligations towards separate collection. For correct disposal, please use authorized waste disposal facilities or return to the distributor at the date a new lighting fitting is purchased. Lamps, if disposed together with the lighting fitting, shall not be broken up since they contain substances which are highly polluting to the environment. Unauthorized disposal of the foregoing waste material is punishable by law.

