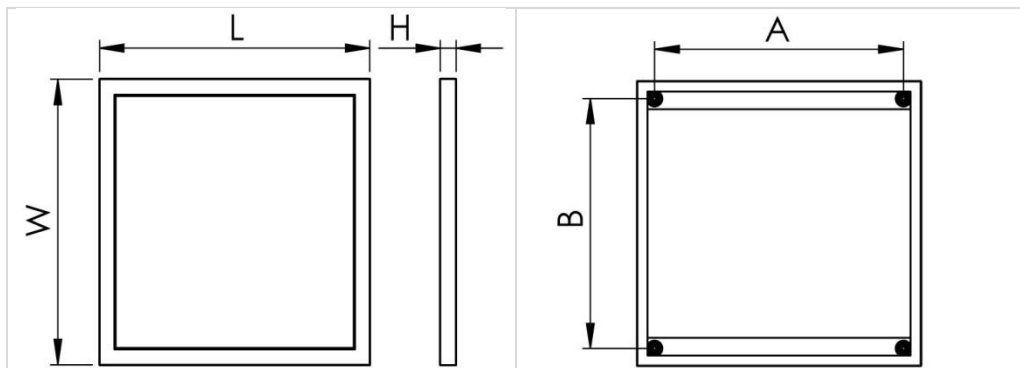


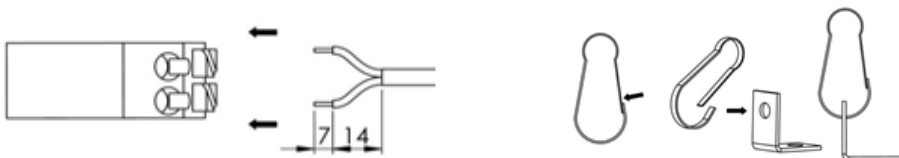


**PRATO LED**

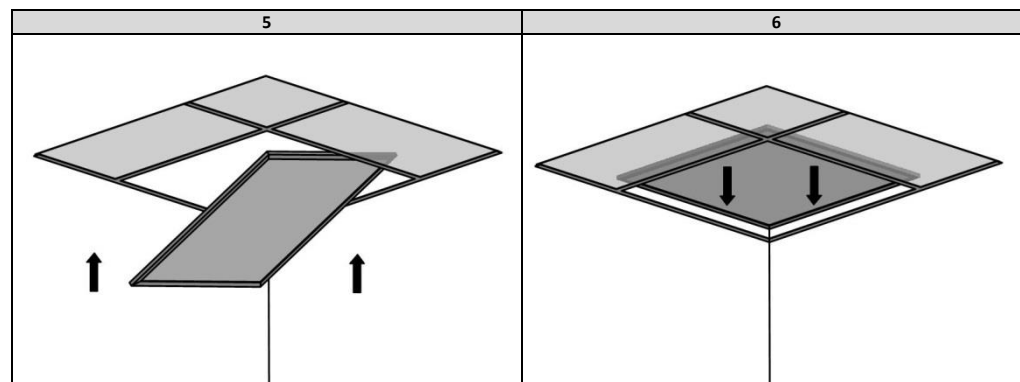
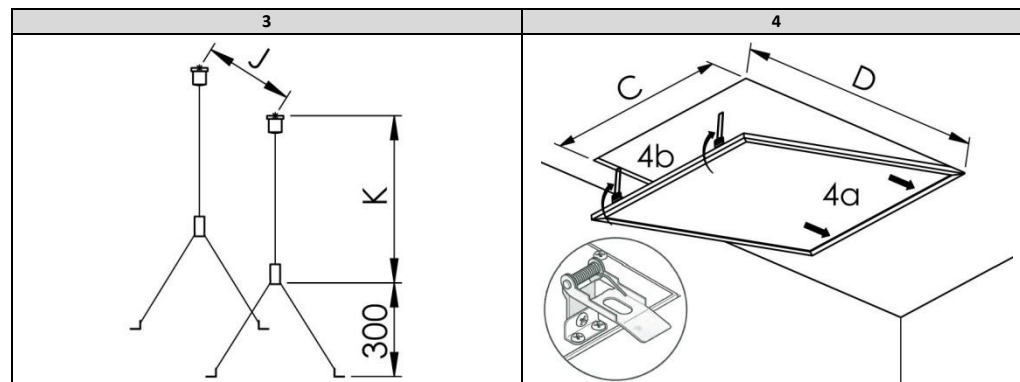
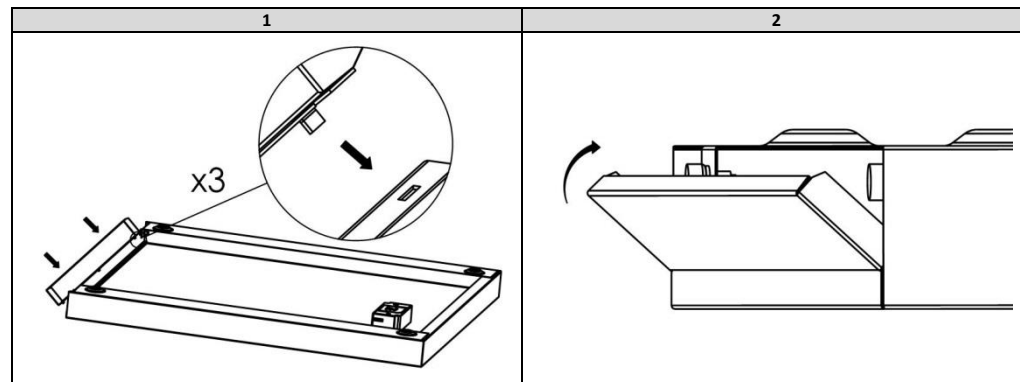
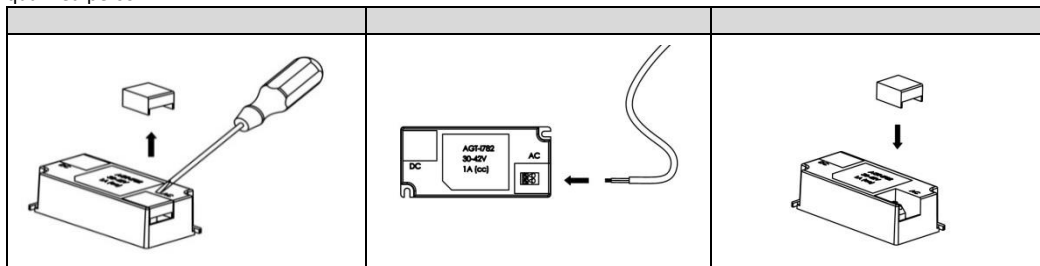


220-240V/ 50-60Hz

	Pic.	Power [W]	W [mm]	L [mm]	H [mm]	A [mm]	B [mm]	K max [mm]	J [mm]	C [mm]	D [mm]	Weight of the set
Surface mounting	1,	36W	605	605	45	530	530	-	-	-	-	4.8kg
	2	35W	305	1205	45	1130	230	-	-	-	-	5,2kg
Suspended mounting	3	36W	595	595	10	-	-	1200	500	-	-	3.5kg
		35W	295	1195	10	-	-	1200	1085	-	-	3,5kg
Recessed mounting	4	36W	595	595	10	-	-	-	-	580	580	3.5kg
		35W	295	1195	10	-	-	-	-	280	1180	3,5kg
Panel mounting	5,	36W	595	595	10	-	-	-	-	-	-	3.4kg
	6	35W	295	1195	10	-	-	-	-	-	-	3,4kg



Light source used in this luminaire should be changed by the producer or its service representative or similarly qualified person.



**Important warnings:**

The luminaires may be installed by qualified registered personnel only.  
 Any manipulation inside the luminaire when the power is activated causes the risk of electric shock.  
 The manufacturer is not responsible for any flaws resulting from non-compliance with these instructions.  
 The manufacturer reserves the right to change the construction of the product.  
 Do not install the luminaire in places without sufficient air circulation.  
 To guarantee safe luminaire functioning, please follow the instructions in the installation instructions.  
 PXF Lighting website: [www.pxf.pl](http://www.pxf.pl)



The European Directive 2002/96/EC on waste electrical and electronic equipment, requires that electric and electronic devices must be disposed of in the normal household waste. The crossed out wheeled bin is reproduced in order to remind obligations towards separate collection. For correct disposal, please use authorized waste disposal facilities or return to the distributor at the date a new lighting fitting is purchased. Lamps, if disposed together with the lighting fitting, shall not be broken up since they contain substances which are highly polluting to the environment. Unauthorized disposal of the foregoing waste material is punishable by law.