

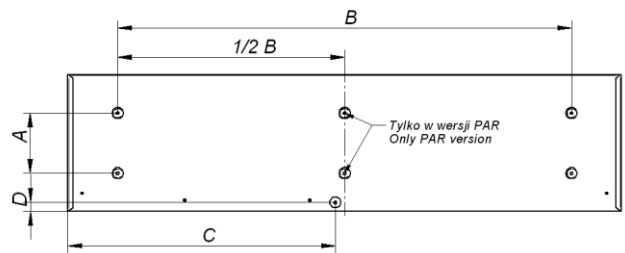
Installation manual  
**Torino II IP65 LED**



230V/50Hz

**1. Dimensions:**

Power [W] OPAL, MPRM / PAR*	A [mm]	B [mm]	C [mm]	D [mm]	K [mm]	L [mm]	Weight [kg] OPAL, MPRM / PAR*
43 / 51*	430	430	544	20	596	596	5,5 / 9,2*
43 / 51*	130	980	573	20	296	1196	8,0 / 10,0*
100 / -*	430	430	544	20	596	596	6,1 / -*



**2. Assembly:**

- Remove the luminaire from the package.
- Unpin masking caps.
- Open the luminaire with a screwdriver.
- Unpin connector from the PCB with LEDs as in Fig.1.
- Unpin carabiners from lighting element.
- Slide the gland in the supply hole and then run the cable through the gland as in Fig.2.
- Connect the wires according to the diagram on the connector as in Figure 3.
- Screw luminaire to the ceiling – luminaire is mounted on the 4 or 6 holes with a diameter of 6.5mm (spacing of holes according to drawing).
- Pin connector and carabiners to the parts mounted on the ceiling.
- Close the luminaire by tightening the screws and fasten masking caps.

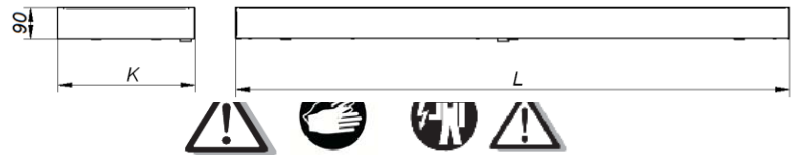


Fig.1.

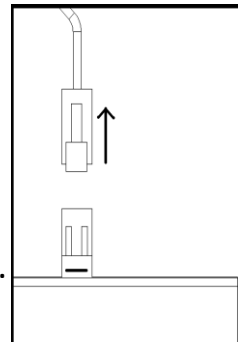


Fig.2.

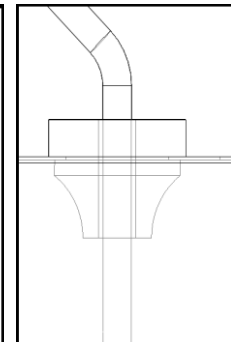
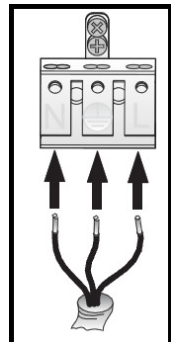


Fig.3.



**3. Important warnings**

The manufacturer cannot be considered liable for any damages deriving from improper, wrong and unreasonable use of the fitting.

Luminaires may be installed by qualified personnel only.

Any manipulation inside the luminaire when power supply is on causes the risk of electric shock.

Manufacturer is not responsible for any flaws caused by avoid using this manual.

Manufacturer reserves a right to change the construction of the product.

Do not assembly in places without air circulation.

To guarantee safety of luminaire functions, please assembly according to instruction.



The European Directive 2002/96/EC on waste electrical and electronic equipment, requires that electric and electronic devices must not be disposed of in the normal household waste. The crossed out wheeled bin is reproduced in order to remind obligations towards separate collection. For correct disposal, please use authorized waste disposal facilities or return to the distributor at the date a new lighting fitting is purchased. Lamps, if disposed together with the lighting fitting, shall not be broken up since they contain substances which are highly polluting to the environment. Unauthorized disposal of the foregoing waste material is punishable by law.