

Installation manual
Torino Sport LED



220-240V/50-60Hz

1. Dimensions:

Power [W]	L	W	Weight [kg]
50	1226	274	9,0
100; 145	1226	486	15,0

2. Installation:

- Turn off the power in the circuit
- Take the luminaire out of the package.
- Open the luminaire using a screwdriver.
- Take the blind caps from the louver module out in order to take it out as in Fig. 5
- Loosen 2 bolts holding the louver module as in Fig. 5 and slide it to the side as in Fig. 4. Louvers module will be held by wires.
- Loosen the 4 bolts on the louver module left
- Pull out the electrical wiring attached to the louver module.
- Take off the holding wires and put the louver module aside.
- Place the rubber gland in the inlet pull the cable through the gland as in Fig. 2
- Fix the base to the ceiling using screws in 6,5mm holes
- Connect the power cable accordingly to the Fig. 3.
- Connect the security wires to louver module.
- Fix the louver module and fit the blind caps back in.

The light source used in the fixture should be serviced and replaced only by the manufacturer or its direct representative or similarly qualified personnel.



3. Important warnings:

The luminaires may be installed by qualified registered personnel only. Any manipulation inside the luminaires when the power is activated causes the risk of electrical shock. The manufacturer is not responsible for any flaws resulting from non-compliance with these instructions. The manufacturer reserves the right to change the construction of the luminaire. Do not install the luminaire in places without sufficient air circulation. To guarantee safe luminaire functioning, please follow the installation instructions.

The European Directive 2002/96/EC on waste electrical and electronic equipment, requires that electric and electronic devices must not be disposed of in the normal household waste. The crossed out wheeled bin is reproduced in order to remind obligations towards separate collection. For correct disposal, please use authorized waste disposal facilities or return to the distributor at the date a new lighting fitting is purchased. Lamps, if disposed together with the lighting fitting, shall not be broken up since they contain substances which are highly polluting to the environment. Unauthorized disposal of the foregoing waste material is punishable by law.

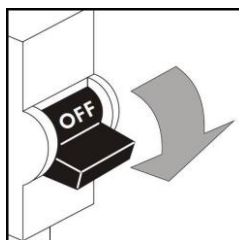
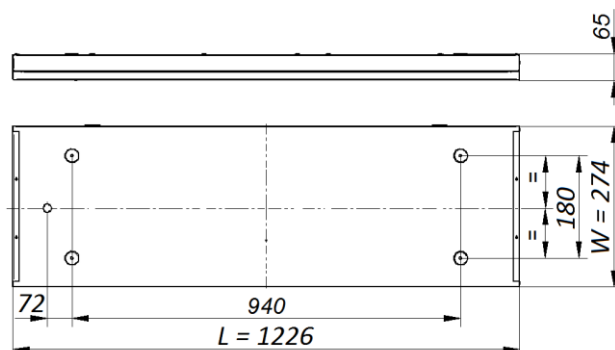
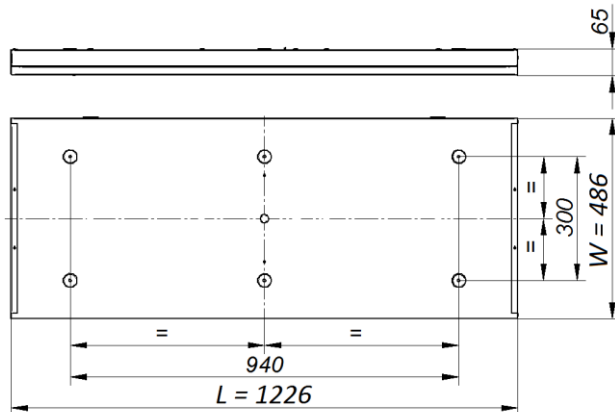


Fig.1.

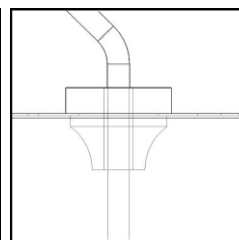


Fig.2.

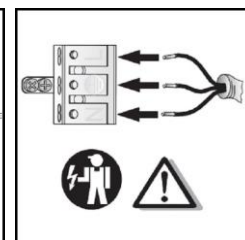


Fig.3.

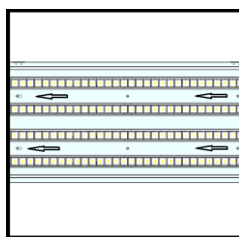


Fig.4.

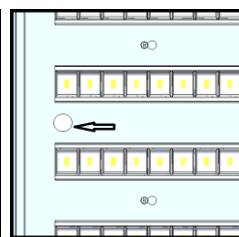


Fig.5.

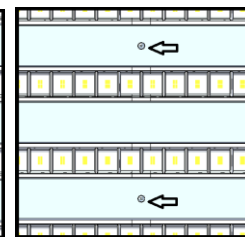


Fig.6.