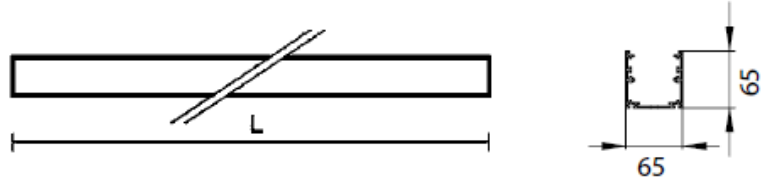




Installation manual
VIP LED IP44



220-240V/50-60Hz

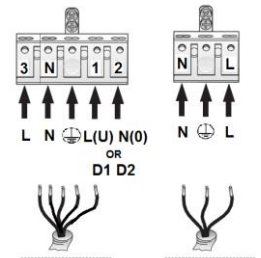


1. Dimensions

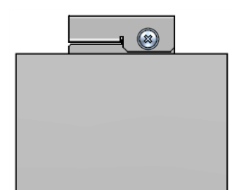
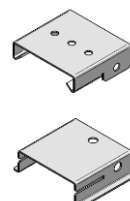
Power [W]	Weight [kg]	L [mm]	Distance of the power cord from the edge [mm]	Distance of fasteners [mm]
12	1,0	300	25	75
17	1,6	585	50	adjustable
24	2,3	875	135	adjustable
31	2,9	1165	135	adjustable

2. Installation

- a) take the diffuser out by disassembling the end caps;
- b) slide out the diffuser and take out the LED module which is fitted with magnets; in case of 12W version – slide it out;
- c) fit the gland into the base of the fitting (lower part should front outside);
- d) slide the suspension elements into the guide rail;
- e) Ceiling installation – pendant luminaire:
 screw the suspension into the ceiling accordingly to the distance shown in the table, twist off the outer nut of the regulator, push the wire until you achieve the desired length of the suspension and twist the nut back on. Pushing it further causes the luminaire to go up while, in order to lower it – loosen up the regulator nut and push it in the direction of the luminaire – the wire will slide out;
- f) Ceiling installation – Surface mounted luminaire:
 screw the suspension into the ceiling accordingly to the distance shown in the table, slide on the joining kits from the luminaire on the mounting elements fitted into the ceiling. Lock it with a screw afterwards.
- g) Connect the power supply accordingly to the markings on the connection terminal/scheme
- f) Place the LED module back on;
- g) slide in the diffuser and fit the end caps



Pendant installation



Surface mounted installation

3. Important warnings:

- The manufacturer cannot be considered liable for any damages deriving from improper, wrong and unreasonable use of the fitting.
- Luminaires may be installed by qualified personnel only.
- Any manipulation inside the luminaire when power supply is on causes the risk of electric shock.
- Manufacturer is not responsible for any flaws caused by avoid using this manual.
- Manufacturer reserves a right to change the construction of the product.
- Do not assembly in places without air circulation.
- To guarantee safety of luminaire functions, please assembly according to instruction.



The European Directive 2002/96/EC on waste electrical and electronic equipment, requires that electric and electronic devices must be disposed of in the normal household waste. The crossed out wheeled bin is reproduced in order to remember obligations towards separately collection. For correct disposal, please use authorized waste disposal facilities or returned to the distributor at the date a new lighting fitting is purchased. Lamps, if disposed together with the lighting fitting, shall not be broken up since they contain substances which are highly polluting for the environment. Unauthorized disposal of the foregoing waste material is punishable by law. More details of directive available.

