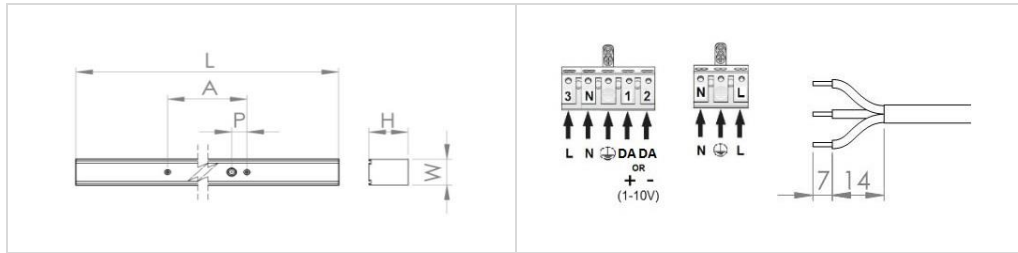
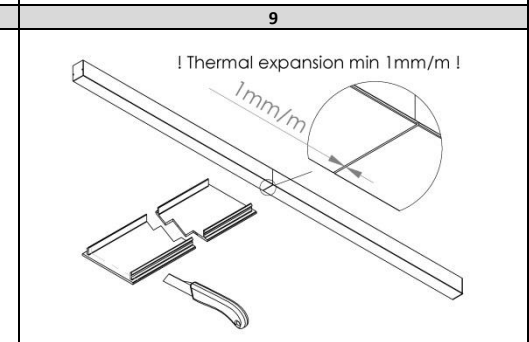
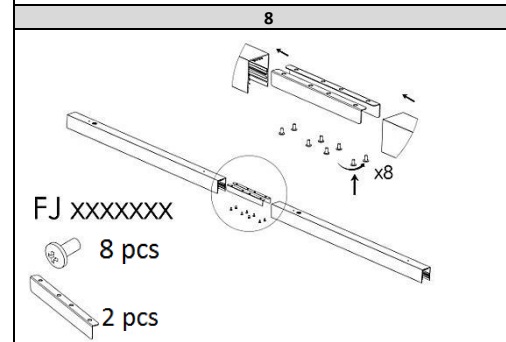
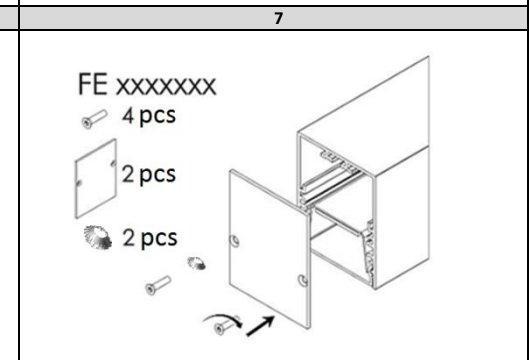
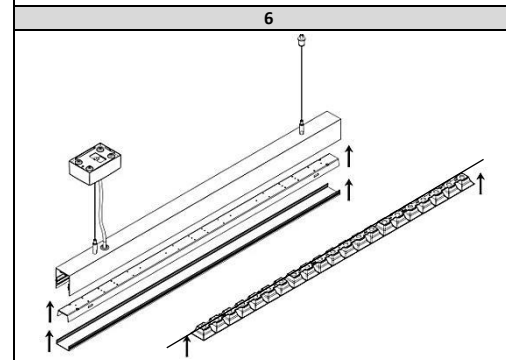
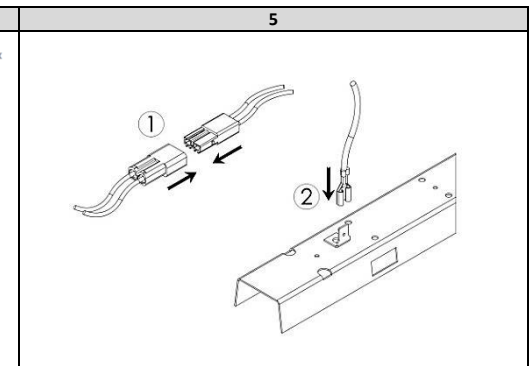
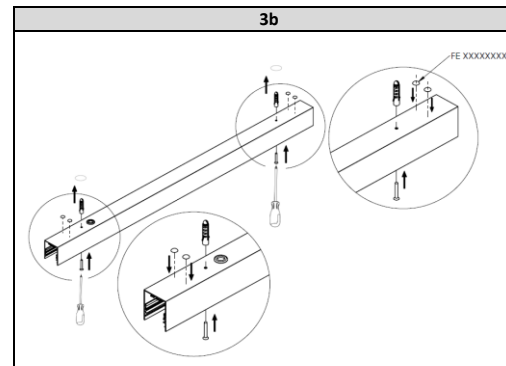
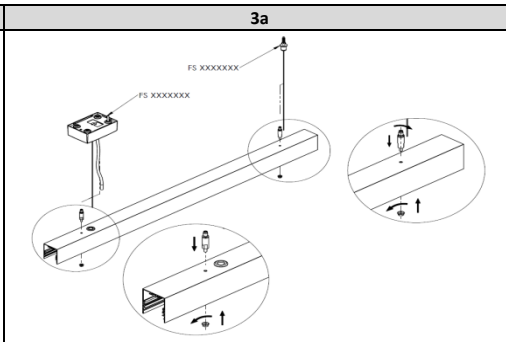
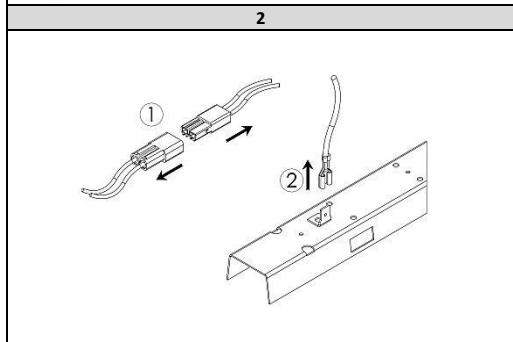
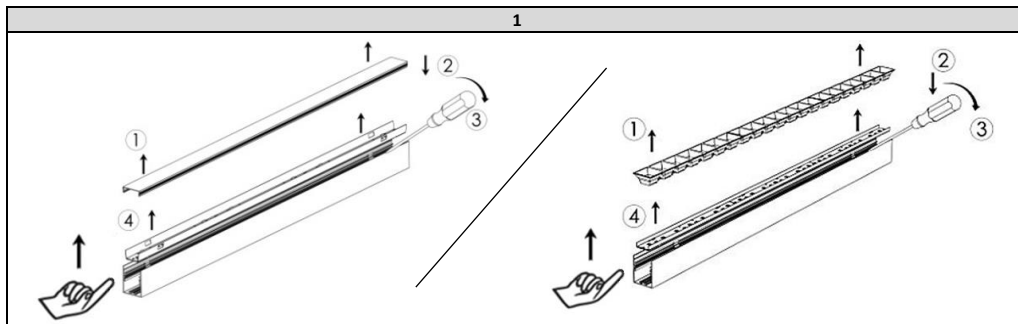




VIGO LED



Power [W]	L [mm]	W [mm]	H [mm]	A [mm]	P [mm]	Weight Opal / MPRM / PAR [kg]
15	560	43	54	460	30	0,95 / 0,95 / 0,85
21	840	43	54	640	30	1,35 / 1,35 / 1,20
28	1120	43	54	920	30	1,70 / 1,70 / 1,50
35	1400	43	54	1200	30	2,10 / 2,10 / 1,80
42	1680	43	54	1480	30	2,50 / 2,50 / 2,15
48	1960	43	54	1760	30	2,90 / 2,90 / 2,50
55	2240	43	54	2040	30	3,30 / 3,30 / 2,85



Light source used in this luminaire should be changed by the producer or its service representative or similarly qualified person. Installation kit supplied with the luminaire does not include anchors for ceiling installation. Installation kit supplied with the luminaire does not include anchors for ceiling installation.

Classification of insulation maintained between LV power supply and control cables - basic insulation. Provide basic insulation between the LV power supply and control cables. Maximum load for through wiring 6A.

Important warnings:
The luminaires may be installed by qualified registered personnel only.
Any manipulation inside the luminaire when the power is activated causes the risk of electric shock.
The manufacturer is not responsible for any flaws resulting from non-compliance with these instructions.
The manufacturer reserves the right to change the construction of the product.
Do not install the luminaire in places without sufficient air circulation.
To guarantee safe luminaire functioning, please follow the instructions in the installation instructions.
PXF Lighting website: www.pxf.pl



Caution, risk of electric shock!

